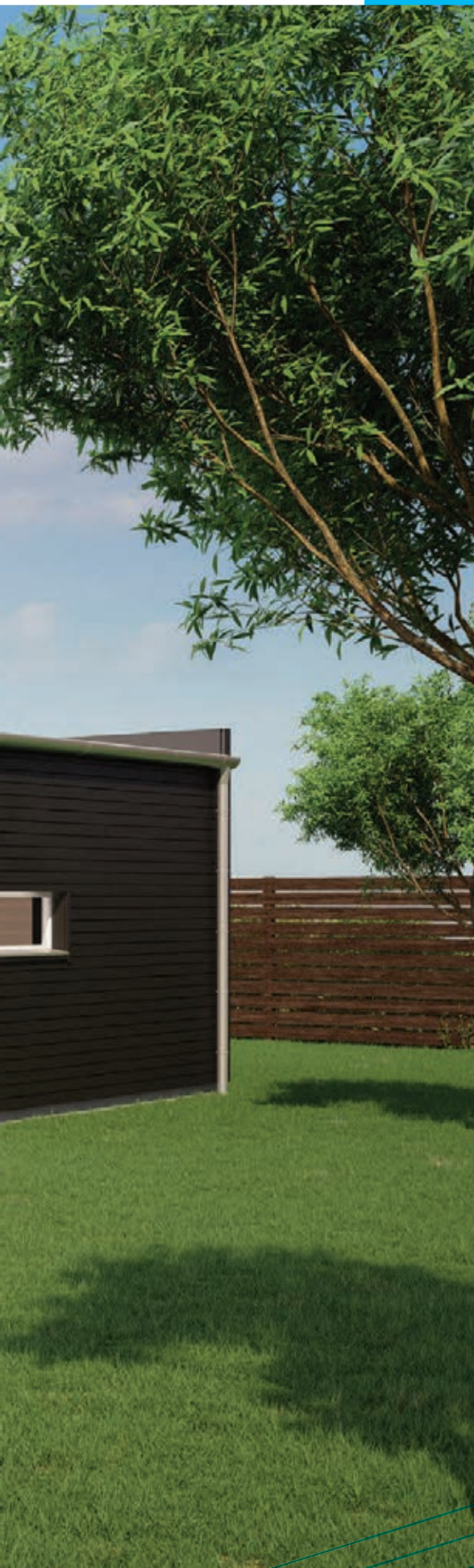




Folding Arm Awnings





Turnils represents the very best of European engineering and Swedish design for window covering systems and componentry.

The Turnils external product range includes an array of world-class folding arm awning technologies designed to suit any outdoor space.

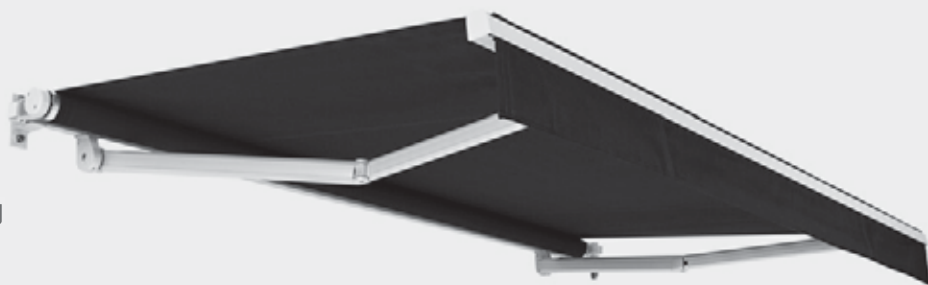
Folding Arm Awnings by Turnils are European engineered, manufactured and designed and built to the highest standards.

All Turnils Folding Arm Awnings feature Dyneema® tape over the elbow and shoulder joints in the arms for superior strength, durability, lighter weight and resistance to moisture and UV. Dyneema is a lightweight yet highly durable material, ideally suited to use in Folding Arm Awnings.

Turnils folding arm awnings offer sleek, contemporary style and finish in three standard hardware colours: White, Silver, Black.

FA22 Piccolo

The FA22 Piccolo is a compact, open-style, entry-level model folding arm awning that offers great value.



FA42 Classic

The FA42 is a classic folding arm awning, with all components engineered and manufactured in Sweden.

FA44 Design

The FA44 Design model boasts sleek European style and designer finishes, with pressure die casted end brackets.







Motorisation

Add motorisation to your folding arm awning for ease of operation. Operated by remote control, you can control up to four awnings using just the one remote control.

All Turnils folding arm awnings are available with Merger motorisation. The competitively-priced Merger motors are specifically designed for folding arm awnings and make motorisation a highly affordable option.

A range of different remote control options are available, including:

- » 1 channel remote
- » 4 channel remote
- » 8 channel remote
- » Timer remote

For the ultimate in convenience and smart operation, add optional Sun and Wind Sensors to the awnings. These clever, solar-powered, wireless sensors can be programmed to automatically open the awnings when the sun reaches a certain level. They can also retract the awnings in wet or windy conditions. A wireless motion sensor is also available.

